

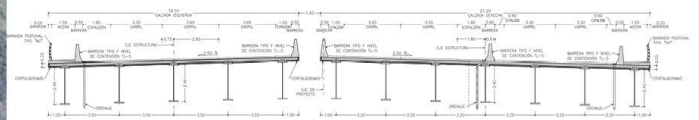
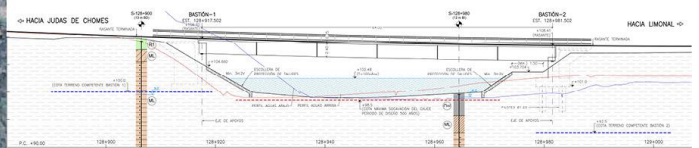
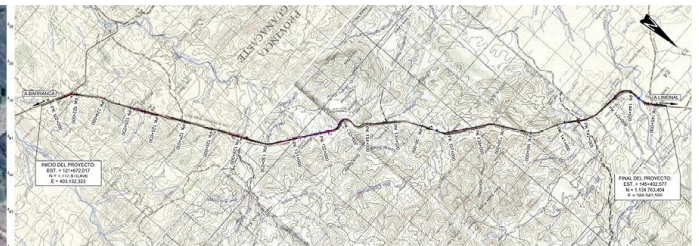
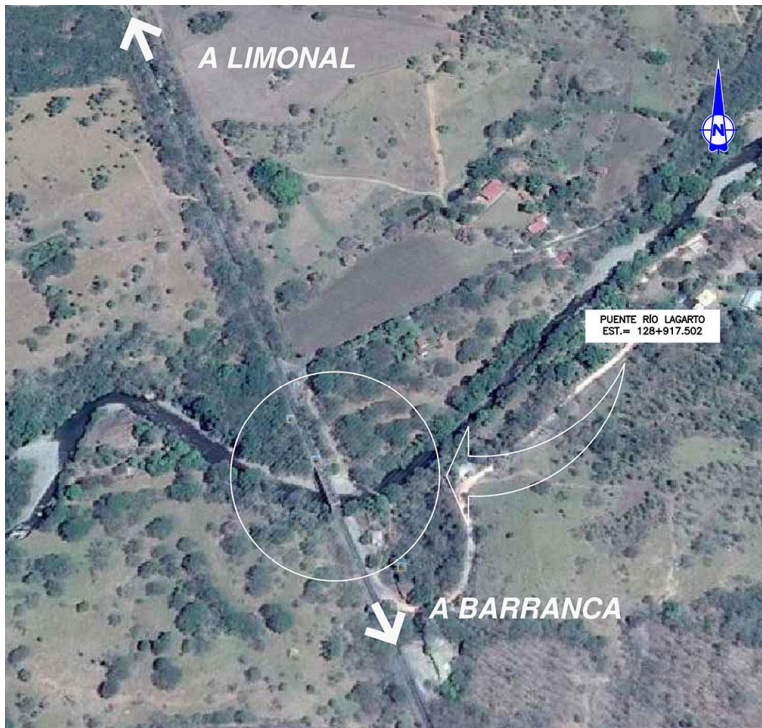


# Rehabilitation RN1. North Interamerican Highway

Barranca and Limonal, Costa Rica / 2015-2017

Structural type  
Characteristics  
Owner  
Client  
Scope

Truss bridge, steel beams and concrete beams  
Highway 50.5 km. Extension to 4 lanes, renewal of pavement, rehabilitation and design of structures  
Banco Interamericano de Desarrollo  
Unidad Ejecutora del Programa PIT  
detailed design



Description



C/ Barquillo 23, 2º | 28004 Madrid | España  
T. (+34) 917 014 460 | F. (+34) 915 327 864  
[www.fhecor.com](http://www.fhecor.com) | [fhecor@fhecor.es](mailto:fhecor@fhecor.es)